



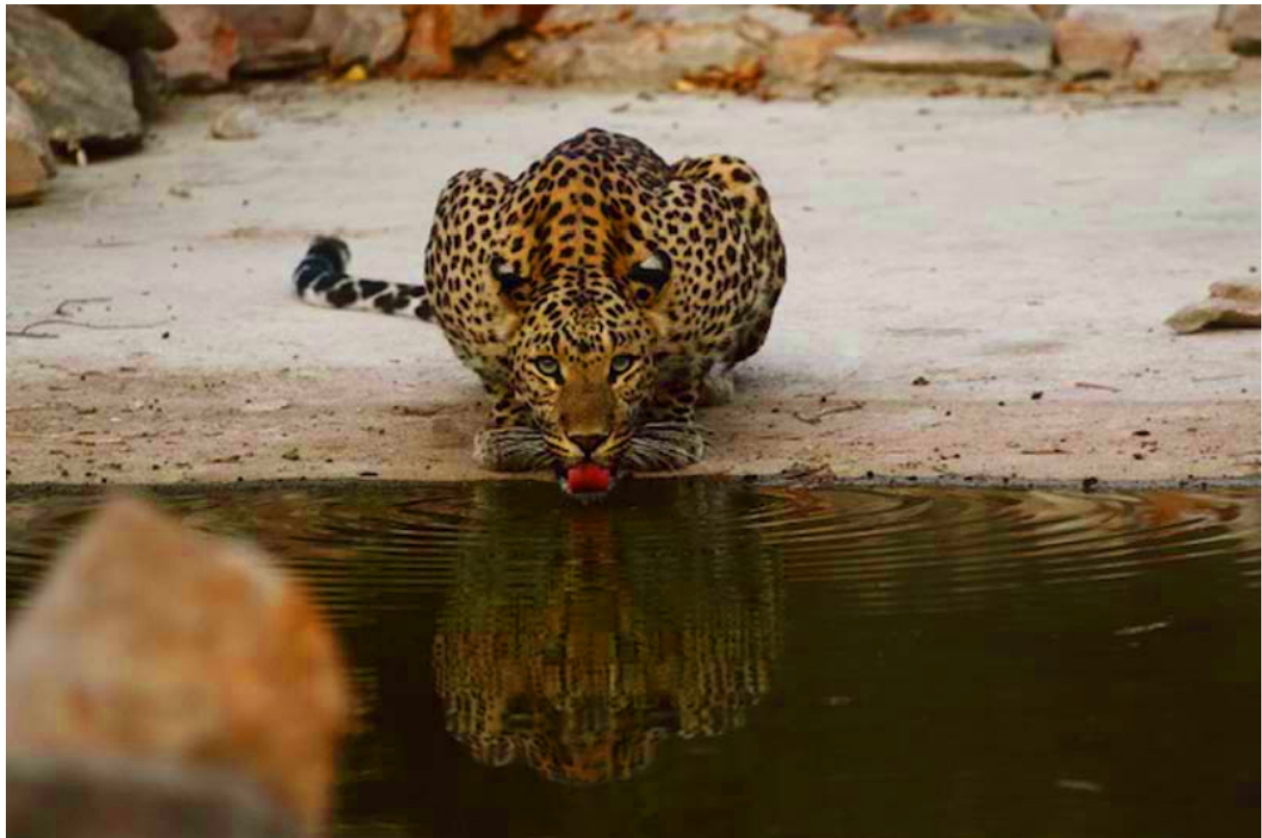
'Jalebi' Leopardess.
Captured by Sumit Juneja during safari

The harbingers of Eco-Tourism in Jaipur 

ABOUT JHALANA LEOPARD SAFARI

Spread in an area of 23sq km Jhalana Leopard Safari Park is home to 30-35 leopards out of which 6-7 leopards have their territory in tourism area of park. Situated right in the heart of Jaipur city closer to Airport, Jhalana slowly is becoming a favorite destination to spot leopards in wild. This otherwise shy cat is the apex predator here and does not have much competition for survival which makes them confident and therefore better sightings .

Once a reserve forest around Jaipur, Jhalana has always been home to leopards and other smaller fauna including spotted deer, blue bulls, wild boars and loads of resident as well as migratory birds. Safari at Jhalana has been operational since December 2016 and as of now two safari routes are open for visitors..



India's great geographical diversity makes it a virtual heaven for wildlife and adventure. You can see a large variety of flora and fauna across its plains, deserts, mountains, rivers, valleys, tropical rainforests, coastal mangroves, Himalayan foothills and the snow-clad regions of the Upper North.

Moreover Jaipur is not left behind for its wildlife. Jhalana area in Jaipur is famous for its leopards.

Jhalana Leopard Safari has grown into a recognized non-profit wildlife park dedicated to conservation, education, and animals in wide open spaces. Jhalana Leopard Safari features over 500 animals representing their wild counterparts, making us a true intersection of human and nature nestled into the picturesque hills of Aravalli. It has leopards, jackals, nilgai, hyena, jungle cat, peacock, etc. With over 400 acres of space for some of the rarest, most endangered and simply coolest species on earth to roam, Jhalana Leopard Safari is truly an experience beyond a zoo.

ONLINE PAYMENT 

PAYTM +91-9929400009 

GOOGLE PAY +91-9929400009 

Jaipur Jungle Safari

Photography Tours

Bird Watching Tours

Stay In The Wild

Jhalana Tour Packages

4X4 Jeep Safari

JAIPUR JUNGLE SAFARI

Jaipur Jungle Safari, a part of the Jaipur sanctuary is located about 12 km from Jaipur on the Jaipur-Delhi highway. It encompasses a large area of 720 hectares and is situated under the Aravalli range. The Park is famous for its vast flora and fauna, and its main aim is to conserve it. It also doubles up as a great place to educate people and conduct research on existing flora and fauna.

At Jaipur Biological Park, ornithologists can expect to see over 285 species of birds, of which, the most popular is the white-naped tit, which can only be found here. When you visit the Park, make sure you also head to Ram Sagar, which is a famous among bird watchers and makes for a great spot to catch different varieties of birds.

While here, you can stay at well-equipped and famous places such as Ganga Vilas, Gopal Vilas and Lalit Vilas, which were famous with the maharajas of the yore as hunting lodges. The Jaipur Zoological Park is also worth a visit and houses animals such as Asiatic lions, Bengal tigers, panthers, hyenas, wolves, deer, crocodiles, sloth bear, Himalayan black bear, wild boar, etc.



ONLINE SAFARI BOOKING

GALLERY



GET IN TOUCH

+91-99294-00009

info@jhalanaleopardsafari.com



LOCATION

Central Road | Malviya Nagar Industrial Area,
Jaipur 302017, India

JAIPUR WEATHER  **37°C**
haze

Sat	Sun	Mon	Tue	Wed	Thu	Fri
						
38°C 26°C	39°C 29°C	40°C 26°C	37°C 27°C	37°C 25°C	37°C 25°C	39°C 28°C

